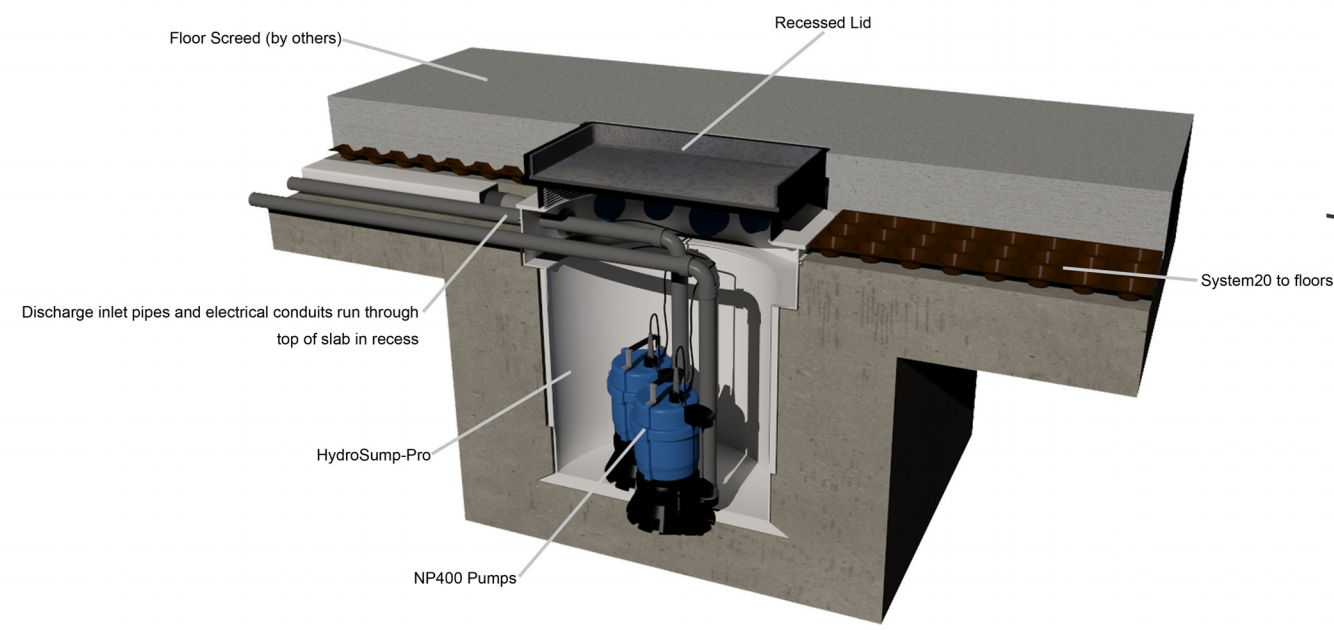
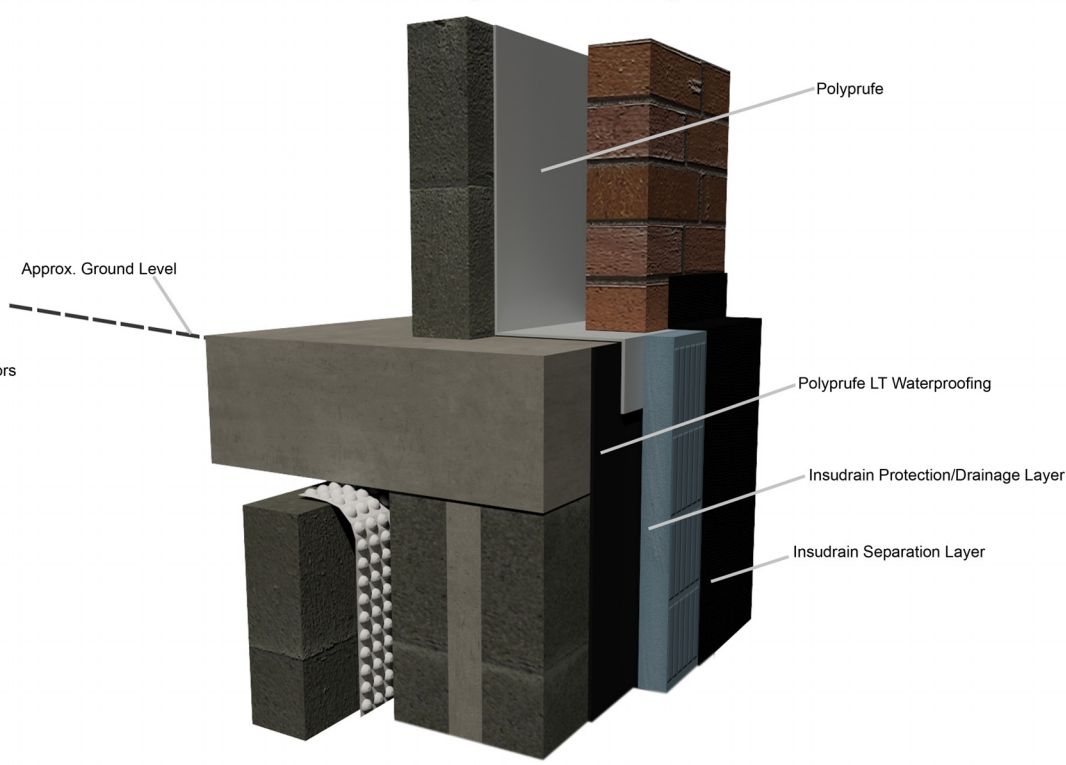


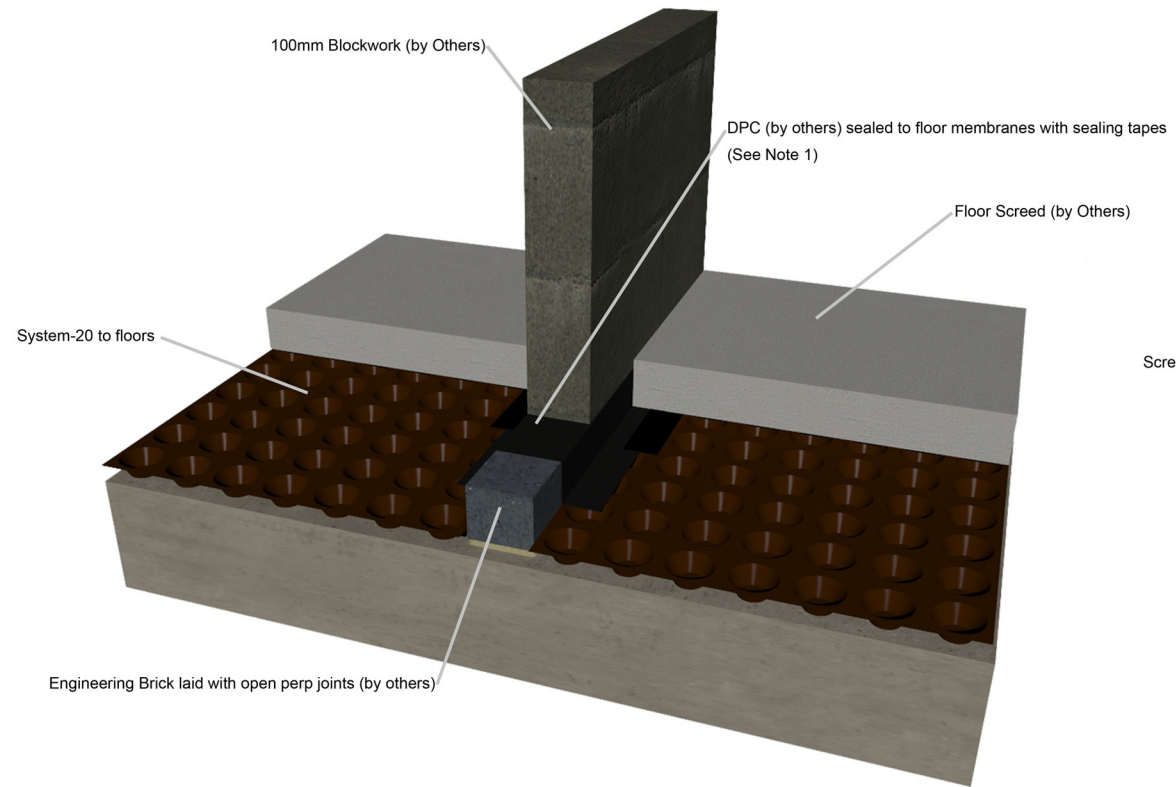
Typical Section Through Sump Pit  
Uninsulated Floor



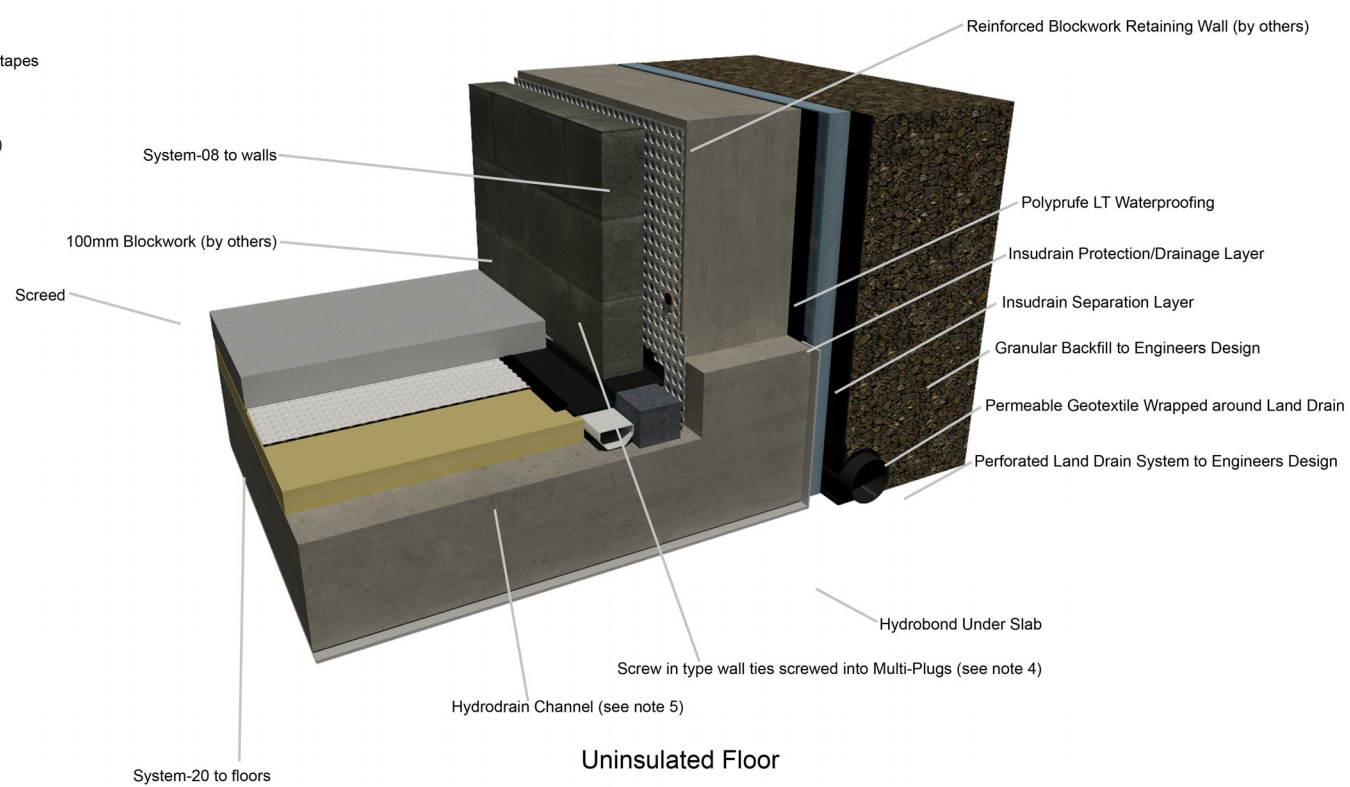
Typical detail through Head of Reinforced Blockwork Retaining Wall  
Showing Blockwork Lining Wall



Typical Section Through Internal Partition Wall  
Uninsulated Floor



Typical Section through Reinforced Blockwall Retaining Wall (without Toe)  
Showing Block Work Lining Wall with Channel in Front



MacLennan drawings are to show Cavity Drain waterproofing details (and where necessary finishes). These details should not be scaled from.

- Notes are referred to on details
- 1) DPC (by others) sealed to Condensation strip with 30mm double side butyl tape (By MacLennan).
  - DPC sealed to System-20 with 75mm over tape. DPC should have to less than 75mm lap onto System-20.
  - 2) Cementitious slurry applied to top face of Kicker and lapped 50mm down outer faces, to act as a DPC. Cementitious slurry to be detailed around reinforcing where required.
  - 3) System-08 has a compressive strength of 350kN/m2 (with studs filled).
  - 3) System-20 has a compressive strength of 250kN/m2 (with studs filled).
  - 4) Multi-Plug fixings are used to secure Cavity membrane to walls. Multi-Plugs have a hole in the centre which can receive a gauge 10 screw thread (max depth 35mm). Either wall ties with an incorporated screw thread (gauge 10) or a screw can be used to secure wall ties to retaining wall. Wall ties and tie positions to be specified by others.
  - Each Multi-Plug can provide a 2.5 K/n pull out
  - 5) Hydrodrain is accessed for maintenance through jetting ports. Jetting ports are manufactured with 43mm pipe and can be detailed to fit in with finishes.
  - Jetting point positions to be agreed with site team, and to be marked on site plan from inclusion into As-Built drawings.
  - 6) The Cavity Drainage will require routine maintenance. This will normally be in the form of an annual service unless; site conditions may mean more frequent servicing if high quantities of Free Lime are found in the system.



The Barn, Field Farm, Porton Road, Porton, Wiltshire SP4 0NF  
Tel: 0845 658 7777 Fax: 0845 658 7788  
Web: www.maclennanuk.com Email:enquiries@maclennan.com

Project:	
Client:	
Title:	
Drawing No.:	
Date:	
Revision No.	